

Features

- Fixed 75cd strobe
- Includes the WPBB surface-mount (standard) or WPLPBB Low Profile (LP) enclosure
- WPBB/LP made of clear Lexan® - provides maximum visibility and reliability, allowing full 75cd output
- Super-Slide® Bracket – Ease of supervision testing
- Checkmate® - Instant voltage verification
- Synchronize strobe and/or horn with AVSM module
- Switch selection for high/low dBA
- Switch for chime, whoop, mechanical, and 2400Hz tone
- Input terminals accept 18 to 12 AWG
- Switch for continuous or temporal 3 tone (not available on whoop)
- Tamperproof re-entrant grill
- 5 year warranty



LP Version

Standard



Application

The S/HS-WP Series Outdoor Signals are wall mount, low profile strobes and horn/strobes that offer dependable audible and visual alarms for warning and emergency notification in outdoor locations.

Description

The S/HS-WP Series Outdoor Signals are 24VDC strobes and horn/strobes equipped with a fixed 75 candela strobe.

This series of outdoor signals are available in two different versions. The standard version includes a surface-mount back box (WPBB) to install directly on a wall. The Low Profile (LP) versions includes a low profile back box (WPLPBB) designed to be installed on a flush-mounted electrical box. The weatherproof enclosure is made of clear Lexan® which provides maximum visibility and reliability for effective visible signaling, allowing full 75cd output.

The S/HS-WP series strobe has a minimal operating current and a minimum flash rate of 1Hz regardless of input voltage. The strobe is synchronized using Gentex sync. protocol or the AVSM Sync. Module.

The S/HS-WP Series is equipped with a universal 4" mounting bracket which incorporates the popular Super-Slide® feature that allows the installer to easily pre-wire the system and test for supervision. The product also features a locking mechanism that secures the signal to the bracket without showing any screws and the Checkmate® - Instant Voltage Verification Feature which allows the installer to check the voltage drop, current draw, and match against the blue print.

Product Listings

- ANSI/UL 464 and 1638
- Complies with American with Disabilities Act (ADA)
- Complies with IBC / IFC / IRC

Technical Specifications

Operating Voltage	Nominal 24VDC (16-33VDC)
Operating Temperature	-31°F - 150°F (-35° - 66°C)
Dimensions	LP Version - 5.75" H x 4.75" W x 3.25" D Standard - 5.75" H x 4.75" W x 4.18" D
Wiring Connections	Terminals accept 18 - 12 AWG
Mounting	LP Version – Single gang, double gang, or 4" square back box Standard Version - Surface mount back box included
Shipping Weight	2.05 lbs.

S-24-WP, 75 Candela, Outdoor Strobe Includes Standard or LP Enclosure			
Model Number	Stock Number	Body Color	WP Enclosure
S-24WR-WP	4890050	Red	Standard
S-24WW-WP	4890051	Off-White	Standard
S-24PWR-WP	4890052	Red-Plain	Standard
S-24PWW-WP	4890053	Off-White-Plain	Standard
SLP-24WR-WP	4890054	Red	Low Profile
SLP-24WW-WP	4890055	Off-White	Low Profile
SLP-24PWR-WP	4890056	Red-Plain	Low Profile
SLP-24PWW-WP	4890057	Off-White-Plain	Low Profile

Model Designations

“W” = Wall Mount

“R” = Red Face Plate

“W”=Off - White Face Plate

“P”= Plain (Note: Plain units are non-returnable)

“LP”= Low Profile (WPLPBB Enclosure)

Strobe Current Ratings	
Candela	75 cd
24 VDC	112 mA
UL Max	170 mA

NOTE: For unfiltered FWR ratings, see installation manual.

HS-24-WP Series, 75 Candela, Outdoor Horn /Strobe Includes Standard or LP Enclosure					
Model Number	Stock Number	Body Color	Reverberant dBA at 10', per ANSI/UL 464	In Anechoic Room dBA at 10'	WP Enclosure
HS-24WR-WP	4890060	Red	70-82	100	Standard
HS-24WW-WP	4890061	Off-White	70-82	100	Standard
HS-24PWR-WP	4890062	Red-Plain	70-82	100	Standard
HS-24PWW-WP	4890063	Off-White-Plain	70-82	100	Standard
HSLP-24WR	4890064	Red	70-82	100	Low Profile
HSLP-24WW	4890065	Off-White	70-82	100	Low Profile
HSLP-24PWR	4890066	Red-Plain	70-82	100	Low Profile
HSLP-24PWW	4890067	Off-White-Plain	70-82	100	Low Profile

Horn Decibel and Current Ratings			
Horn Setting	Minimum dBA at 10', Per UL 464 (HIGH)	Minimum dBA at 10', Per UL 464 (LOW)	Regulated 24VDC Max. Operating Current, at High Setting (mA)
Temporal 3 2400Hz	78	71*	28
Temporal 3 Mechanical	76	70*	25
Temporal 3 Chime	70*	66*	15
Continuous 2400Hz	81	74*	28
Continuous Mechanical	80	72*	25
Continuous Chime	70*	66*	15
Whoop	82	69*	56

*Operating the horn in this mode at this voltage will result in not meeting the minimum ANSI/UL 464 reverberant sound level required for public mode fire protection service. These settings are acceptable only for private mode fire alarm use. Use the high dBA setting for public mode application (not applicable when using the chime tone. The chime tone is always private mode).

Tone Switch Locations

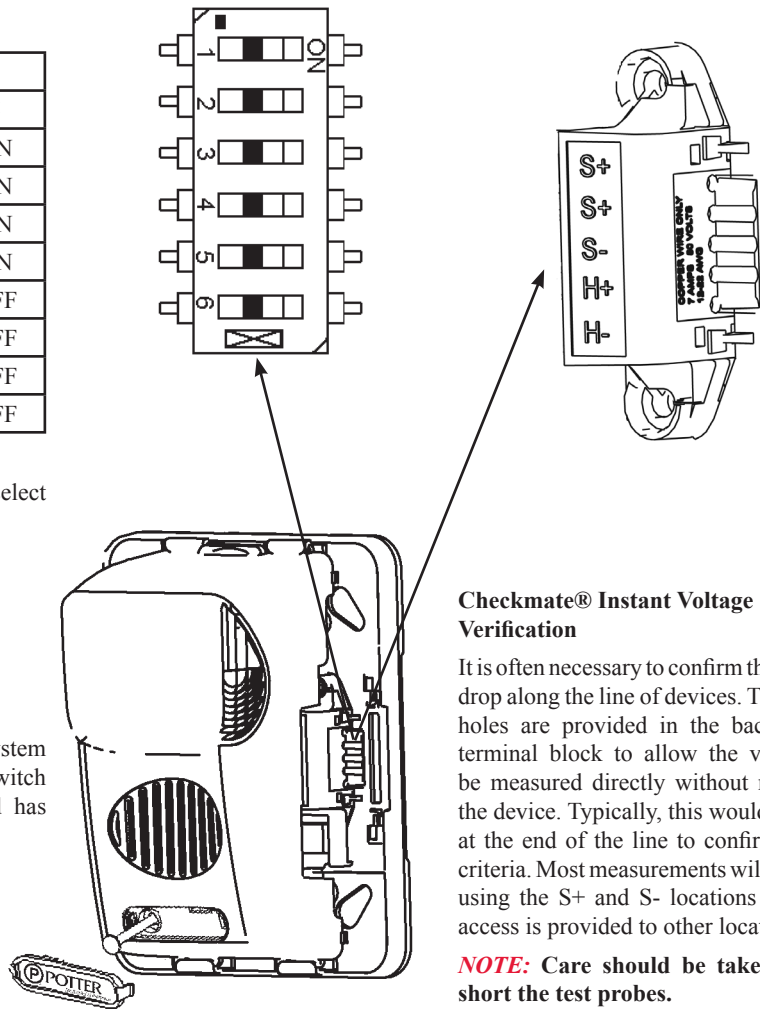
Tone	Switch Position		
	3	4	5
Mechanical Temporal 3	ON	ON	ON
Mechanical - Continuous	OFF	ON	ON
2400Hz - Temporal 3	ON	OFF	ON
2400Hz - Continuous	OFF	OFF	ON
Chime - Temporal 3	ON	ON	OFF
Chime - Continuous	OFF	ON	OFF
Whoop	ON	OFF	OFF
Whoop	OFF	OFF	OFF

NOTES:

- Switch Positions 1 and 2 in the OFF position to select isolated horn and strobe power inputs
- Switch Position 6 ON = HIGH dBA
- Switch Position 6 OFF = LOW dBA

Super Slide® Mounting Bracket

Allows the installer to pre-wire the system, test for system supervision, remove the signal head until occupancy, switch out signals without changing mounting brackets and has locking edge connector for snap-in-place installation.



Checkmate® Instant Voltage Verification

It is often necessary to confirm the voltage drop along the line of devices. The access holes are provided in the back of the terminal block to allow the voltage to be measured directly without removing the device. Typically, this would be done at the end of the line to confirm design criteria. Most measurements will be taken using the S+ and S- locations although access is provided to other locations.

NOTE: Care should be taken to not short the test probes.

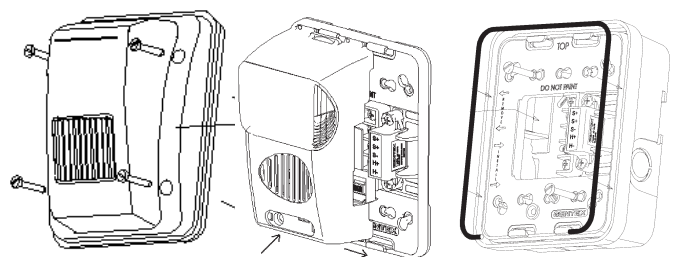
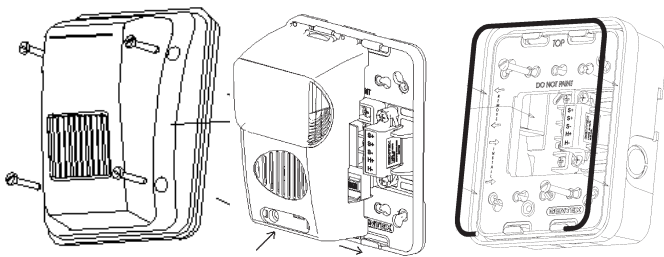
Mounting Outdoor Enclosure

Super Slide® Mounting Plate:

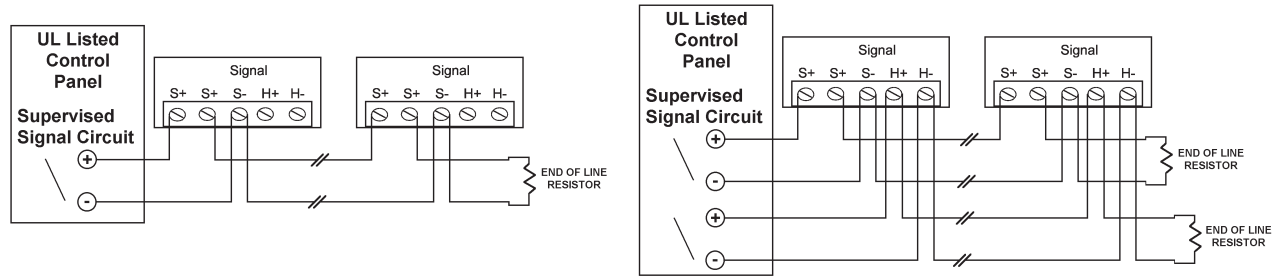
Mounts to WPBB Outdoor Enclosure

Super Slide® Mounting Plate:

Mounts to WLPBB Outdoor Enclosure



Wiring Diagrams



NOTES:

- All strobes are designed to flash as specified with continuous applied voltage. Strobes should not be used on coded or pulsing signaling circuits. However, use of the AVSM control module or Gentex synchronization protocol is permitted to synchronize the strobe, horn and/or mute the horn.
- **FOR SYNCHRONIZATION WIRING INFORMATION, REFERENCE AVSM CONTROL MODULE DATA SHEET (8830050) AND/OR AVSM CONTROL MODULE MANUAL FOR SYNCHRONIZATION MODULE WIRING DIAGRAMS. AVSM CONTROL MODULE DATA SHEET AND MANUAL CAN BE OBTAINED AT <http://pottersignal.com> OR CALL POTTER ELECTRIC AT 1-800-325-3936.**

Architect and Engineering Specifications

The audible and/or visible signal shall be Potter S/HS-WP Outdoor Series or approved equal and shall be listed by Underwriters Laboratories Inc. per ANSI/UL 1638 and/or ANSI/UL 464.

The notification appliance (combination audible/visible) shall produce a peak sound output of 100dBA or greater at as measured in an anechoic chamber. The signaling appliance shall also have the capability to silence the audible signal while leaving the visible signal energized with the use of a single pair of power wires. Additionally, the user shall be able to select either continuous or temporal tone output with the temporal signal having the ability to be synchronized.

The audible/visible and visible signaling appliance shall also maintain a minimum flash rate of 1Hz or up to 2 Hz regardless of power input voltage. The appliance shall have an operating current of 112mA or less for the 75Cd strobe circuit. The appliance shall also be capable of meeting the candela requirements of the ADA (75cd).

The appliance shall be polarized to allow for electrical supervision of the system wiring. The unit shall be provided with a mounting bracket with terminals with barriers for input/output wiring and be able to mount to a single gang or double gang box or double workbox without the use of an adapter plate. The unit shall have an input voltage range of 16-33 volts with either direct current or full wave rectified power for 24 volt models.

The appliance shall be capable of testing supervision without disconnecting wires. Also the appliance shall be capable of mounting to a surface back box. The unit shall also be able to verify voltage at the unit without removing unit.

The appliance has extended temperature range of -31° to 150°F (-35° to 66° C). The appliance shall satisfy virtually all outdoor and severe environment applications. The WPBB enclosure includes a gasket that must be inserted between the box and mounting bracket. There are drain holes in the back box to allow for drainage, the seal on the WPBB enclosure is not water tight. The WPLPBB enclosure includes a weather seal for mounting to wall and intended for use with universal electrical box. To allow for drainage, bottom edge of enclosure is not water tight.